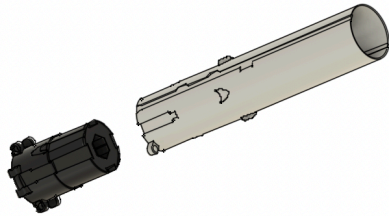


# Falcon 9 Assembly

For best results use super glue or plastic cement.  
Questions? Email [support@maxgrockets.com](mailto:support@maxgrockets.com)  
Video at <https://www.youtube.com/@maxgrockets>

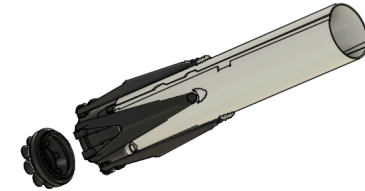
## 1. Assemble First Stage Base



A. Glue the Engine Mount into the First Stage Bottom. Be sure to align the flat sides to match the raceway indents.



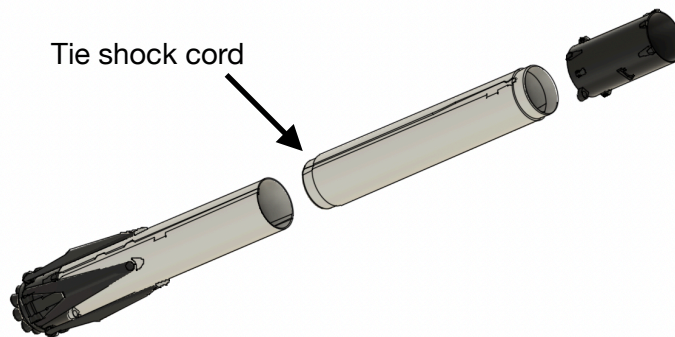
B. Attach all four landing legs and struts. Carefully twist in the struts to the pivot locations in the legs and body.



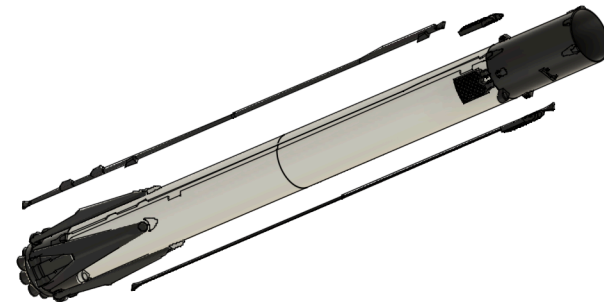
C. Fold the legs and screw in the engine cap.

## 2. Assemble First Stage

**Warning:**  
Be sure to attach the shock cord to the first stage middle before gluing!



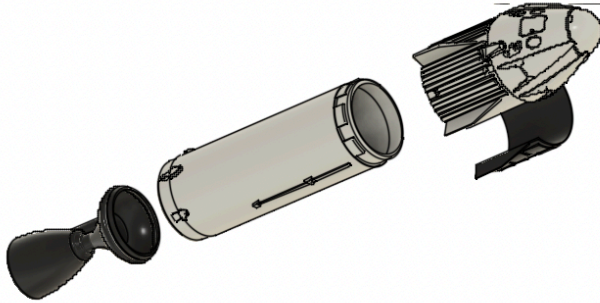
A. Glue the first stage halves and interstage together. Be sure to align the raceway indents and the launch lugs. Both lugs should be on the same side and same sized raceways should match.



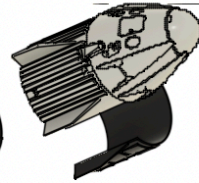
B. Snap all four grid fins to the interstage

C. Glue the raceways in the inserts.

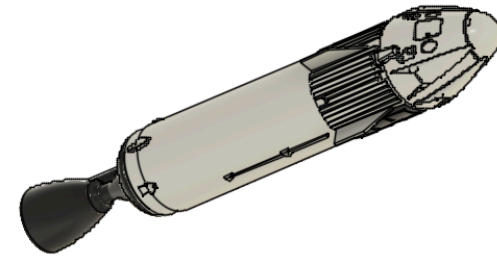
### 3. Assemble Second Stage



A. Glue the second stage engine into the second stage body.

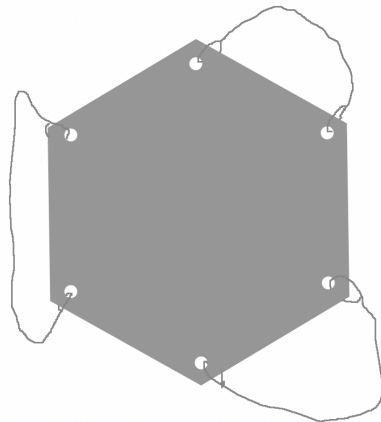


B. Screw the crew dragon onto the second stage.

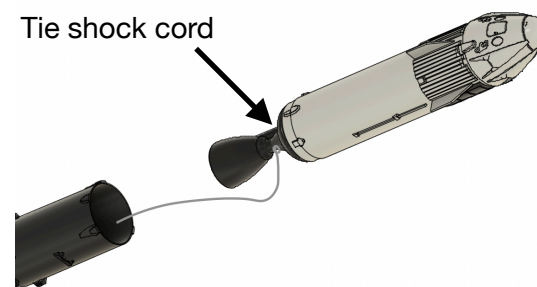


C. Glue the black crew dragon part to the main crew dragon and hold together with clothespins until dry.

### 4. Assemble and Attach Parachute



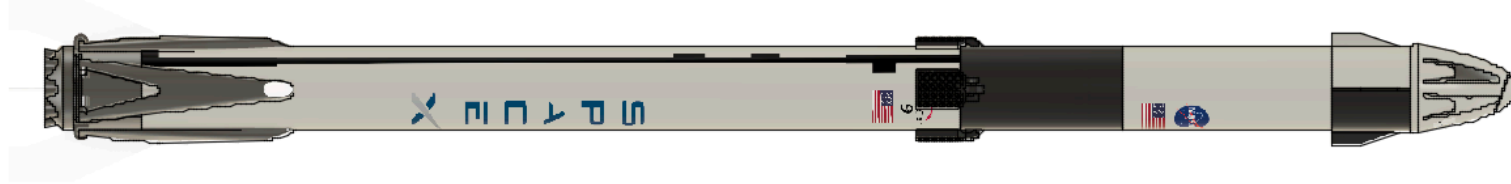
A. Tie a string to a hole in the parachute and the other end to the adjacent hole. Repeat for the other two strings.



B. Tie the other end of the shock cord to the second stage engine, passing the shock cord through the gap in the engine.

C. Attach the parachute by gathering the three strings together in a loop and passing the tip of the parachute around the shock cord and through the loop.

## 5. Attach First Stage Decals



A. Apply the waterslide decals of the NASA and SpaceX logos to the first stage as shown.

B. Attach the Falcon 9 and flag to top of the SpaceX side of the first stage. Apply the Nasa meatball and flag to the other side.

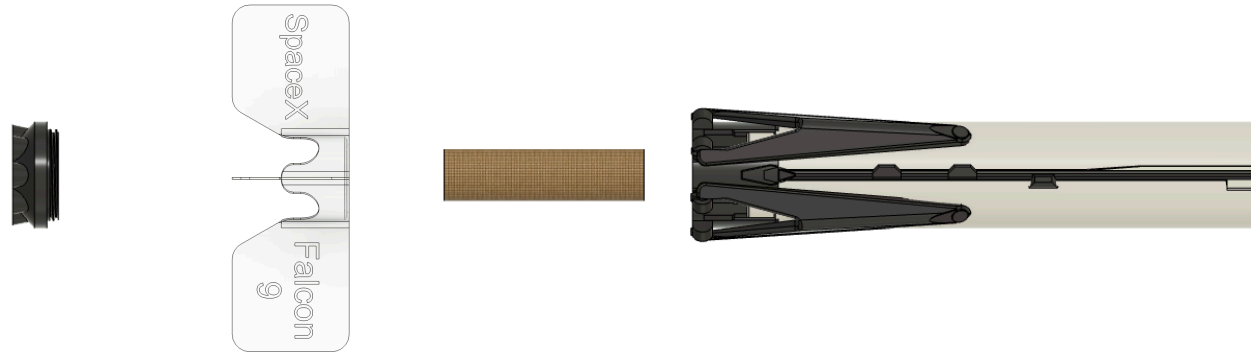
## 6. Attach Second Stage Decals



A. Attach Nasa meatball logo with flag to the bottom of each side of the second stage.

B. Attach small stickers to dragon capsule on the emergency rocket ports.

## 7. Prepare for flight



A. For flight insert a D series (24mm x 70mm) engine and place fin assembly between the Engine Cap and Engine Mount.